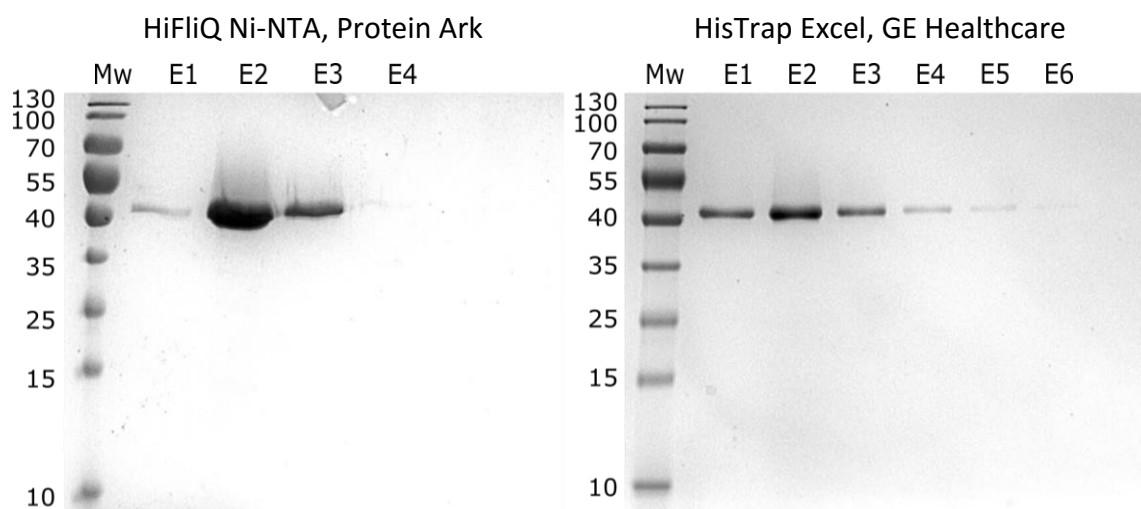


## TECH NOTE

### HiFliQ Ni-NTA AKTA Columns



**Loading:** Supernatant from 100 ml yeast culture (*P. pastoris* X33 strain), total protein 0.3 mg/ml) was directly loaded on to 1 ml Ni-NTA affinity column (either HisTrap Excel from GE Healthcare or Ni-NTA HiFliQ).

**Washing:** NaP 50 mM, pH 7.4, NaCl 250 mM, imidazole 0 mM and 50 mM (5-10 ml each).

**Elution:** NaP 50 mM, pH 7.4, NaCl 250 mM, imidazole 500 mM. 0.5 ml Fractions were collected, and loaded into a 12% SDS-PAGE gel (15µl per wells).

Result	Fractions	Total Protein (mg)
HisTrap Excel (GE Healthcare)	6	0.8 - 0.9
HiFliQ Ni-NTA (Protein Ark)	3	1.1

**Key Findings:** Protein Ark's Ni-NTA HiFliQ columns eluted 20-30% more protein in half the number of fractions. Final concentration of protein eluted from GE HisTrap columns was 0.3 mg/ml compared to 0.73 mg/ml eluted from Protein Ark's HiFliQ column. Final purity for both columns was comparable.

Description:	Qty:	Product Code:
HiFliQ Ni-NTA AKTA column	1 x 1ml	HiFliQ1-NiNTA-1
HiFliQ Ni-NTA AKTA columns	5 x 1ml	HiFliQ1-NiNTA-5
HiFliQ Ni-NTA AKTA column	1 x 5 ml	HiFliQ5-NiNTA-1
HiFliQ Ni-NTA AKTA columns	5 x 5 ml	HiFliQ5-NiNTA-5

Data kindly offered by Habrylo O., PhD - BIOPI Lab, Amiens, France

Distributed in Australia by LeTap Bio-Solutions, Telephone: +61 (02) 8197 2639, FAX: +61 (02) 8080 8100, Email: [sales@letapsolutions.com](mailto:sales@letapsolutions.com), Web: [www.letapbiosolutions.com](http://www.letapbiosolutions.com) (LBS- M10010)